

T.M.C TOWN MINING Co.,LTD

Metal works, Machine industry

Electronic industry



Chemical industry

Battery industry

Aerospace industry

MESSAGE



“TMC who initiates a bright future, -human being, life and nature world - FOR PROLONGING LIFE OF PLANET EARTH”



CEO Kazuyoshi Tanaka

To be carried out open discussion for prevention of global warming in every place, caused by environmental destruction that extreme weather disaster are increasing at all the region.

Even among them, the Kyoto Protocol says that global environmental problems are the most important issue for all mankind in the 21st century. Measures are now under review in the people all over the world bring their collective wisdom TMC founded to aim at the establishment of Recycling-based Society.

We would like to express our deepest appreciation for all the support from customers. Hence, it's followed that TMC has expanded the business, as well as increasing of business site, employee and type of product.

Even if some material dumping as industrial wastes such as Rare Metal Scrap containing various metal, TMC recycles those scrap on a global scale.

The technique, to give customer's satisfaction, TMC recycles to raw material from various characteristic of rare metal scrap generated ex every field in designed process without environmental pollution that is environmentally friendly to the workshop and the surrounding areas. We will unite and do our best to improve with ideas and effort by continuous R & D also a number of patents.

As for Japan is poor in natural resources, it's a very important job to recycle scrap to raw material. TMC takes pride in taking a role of the security of securement resources for rare metal. The recycling business is economical also can say the work that is friendly to the earth in the environmental aspect definitely.

For prolonging life of planet earth-Happiness for everyone.

Guide by this corporate philosophy, we will continue to press forward.

OVERVIEW



"TMC achieves success with advanced technology and competitive positioning"

In 1986, TMC was started in Osaka, Japan. TMC has continued to grow in the field of resources. In addition, TMC has been recognized as a leading company working for the global environment through the recycling of nonferrous metals including rare metals in compliance with social requirements in the environment.

TMC is aiming to work as world-class recycling company through excellent management practices in the areas of QC and its participation in maintaining environmental standards. TMC is also committed ideology for global survival through R/D.

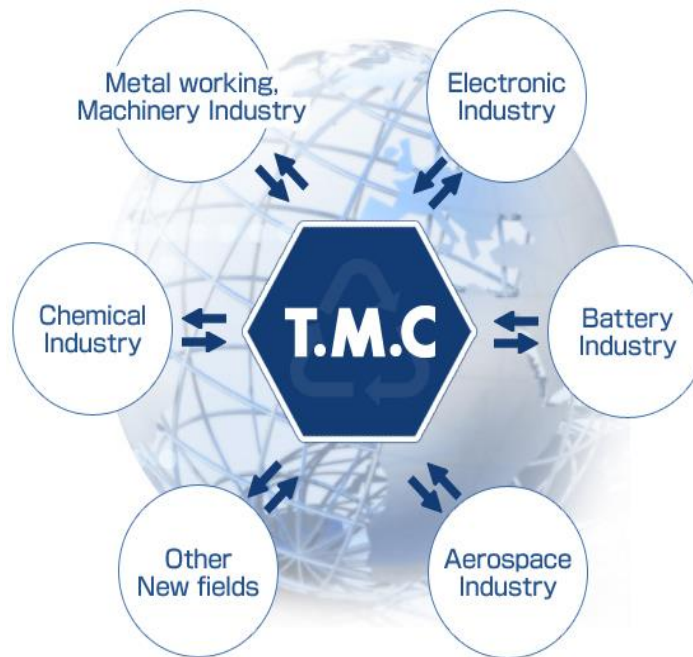
Company name	TOWN MINING CO.,LTD.	Correspondent banks
Founded	March 1986	• Resona Bank, Ltd. (Kyoto branch)
Capital	¥95,250,000	• Mizuho Bank Ltd. (Kyoto branch)
Executives	President Kazuyoshi Tanaka	• The bank of Tokyo-Mitsubishi UFJ, Ltd. (Kyoto Branch)
	Executive director Akira Miyawaki	• Sumitomo Mitsui Banking Corporation (Kyoto Branch)
	Managing Director Masanobu Takaesu	• Shoko Chukin Bank (Kyoto Branch)
	Managing Director Yoshiro Kinomoto	• Shiga Bank (Kyoto Branch)
	Director Tsuyoshi Urano	Customers
	Director Iwao Maeda	• ALCONIX Corporation
	Auditor Shoichi Taguchi	• KYOCERA Corporation
Employees	60 persons (as of Sep.1.2017)	• NIPPON Steel & SUMITOMO Metal Corporation
Business sites	9 places (Domestic 5 & overseas 4)	• JFE STEEL Corporation
		• Sony Group
		• TDK Corporation
		• Hitachi Maxell, Ltd.
		• FUJIKOSHI Corporation
		• MURATA MANUFACTURING CO., LTD.
		• Overseas (America, Asia and Europe each district)
		etc.

VISION



“Sustainable Solution For The Earth”

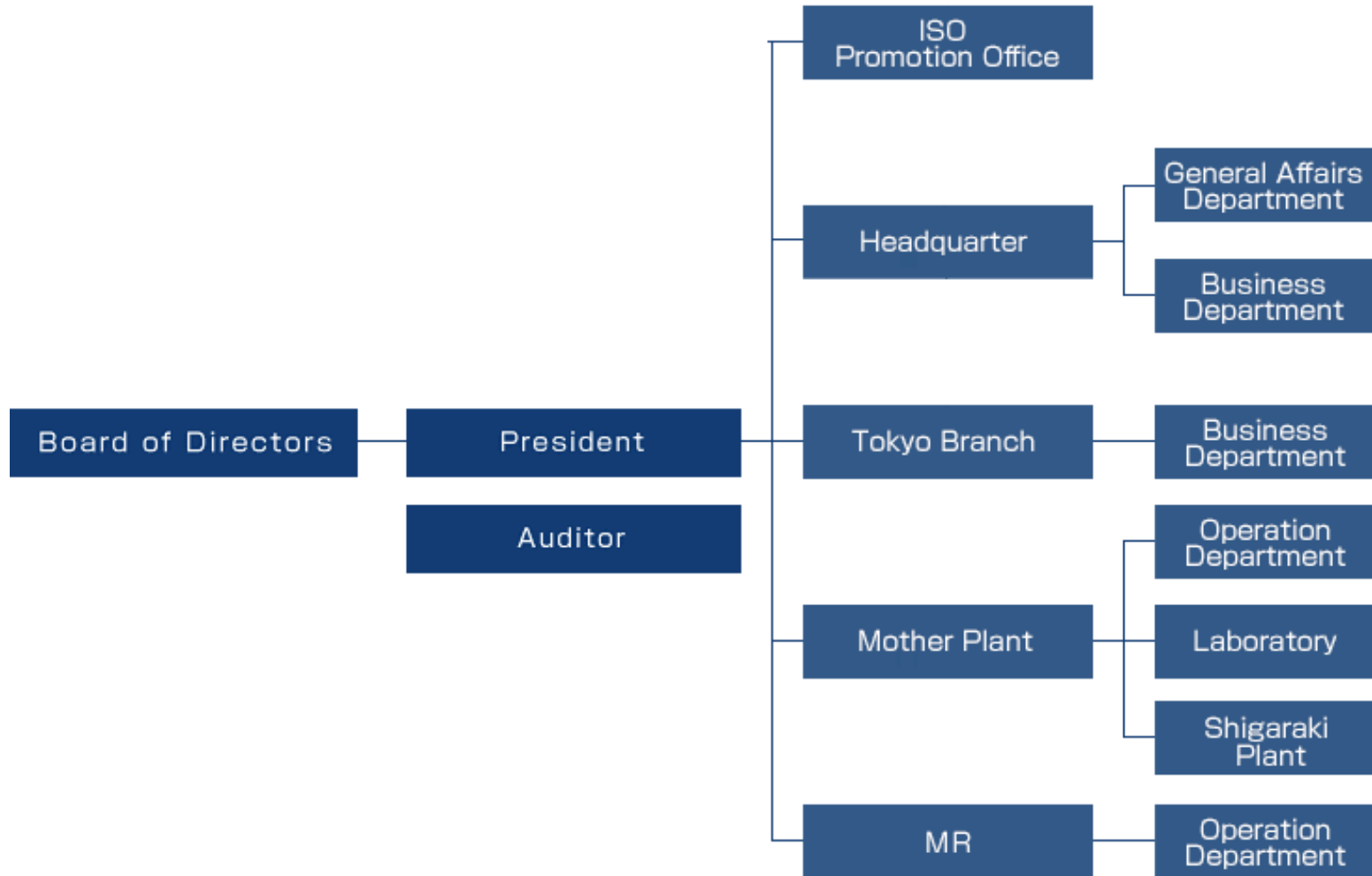
TMC is committed to global survival by being part of the global future



Rare metal...that does not exist on earth rarely

TMC exists in the center of globe, where people are living in.

ORGANIZATION



HISTORY



“Now TMC aims to be reborn as a global recycling company, aspiring to become the world–best.”

2017 08	Merged TCMCR Co.,Ltd. ,and Opened “MR”.	2005 11	Established TMC CHINA
2015 04	Opened “ Shigaraki Plant “	2002 12	Obtained ISO 9001
2014 04	Moved to Kyoto	2002 08	Increased capital up to 80,250,000 yen
2012 03	SiX (Silicon Powder) project is launched	2001 04	Increased capital up to 60,000,000 yen Started Electrolyzing of Cobalt [Reclaim of high-purity cobalt metal]
2011 02	TMC ‘s proposal has been adopted as “Subsidy Business”, The Ministry of Economy,Trade and Industry was offering	2000 12	Obtained ISO 9002
2010 01	Installed Carbonization Furnace at Mother Plant	2000 10	Opened IT Center in Shiga Pref
2009 05	All plant facilities concerned with TMC have been integrated to Mother Plant	1998 10	Opened Solar Material division
2009 05	Opened “ Mother Plant “with a state of the laboratory	1998 10	Established TMC KOREA
2007 10	Increased capital to 95,250,000 yen	1996 04	Established Notogawa Weighing Center Co.,Ltd.
2006 09	Separate Electrolysis Division , established TCMCR Co.,Ltd.	1996 04	Opened Notogawa plant in Shiga Pref
2006 01	Open TOKYO BRANCH	1995 09	Opened Titanium Division in Shiga Pref
		1994 08	Opened Distribution center in Shiga Pref
		1988 09	Moved to Higashi–Osaka and Organized Corporation with a capital of 30,000,000 yen
		1986 03	Started doing business in Osaka City

COMPANY OUTLINE



“Business base” Mother Plant



“Has revived as a raw material in the mother plant quality is trusted”

thorough quality control, aiming to consolidate in one place the work efficiency, and each plant was in Shiga Prefecture in May 2009, Having a site of about 26,400 square meters, our company started as a mother plant exactly.

Secondary battery (Li-ion · MH) scrap, solar cell-related scrap, nickel, cobalt, titanium, tungsten Emissions such as handling huge yards, a rare metal, making full use of analytical instruments, equipment, machinery of various control signals to suppliers I have recycled as raw material quality, which is reliability.

事業所紹介
COMPANY OUTLINE



“Business base”
Shigaraki Plant



With increase in quantity of handling, we opened a plant in the same city as a satellite plant of Mother Plant.

It occupies a land area of approx. 6,600 square meters

and it's a good location in 3 minutes access from Shigaraki IC (interchange) at the New Meishin-Expressway.

MR



Zip code : 933-0073

Address : 142-2,Ogino,Takaoka-city,

Toyama, Japan

Tel : 81-766-29-0999

Fax : 81-766-29-0004

事業所紹介
COMPANY OUTLINE



“Business base”

Head Office



Zip code : 604-8153

10F Risona Kyoto Bldg.,

691 Takannacho Shijo-Agaru

Karasuma-dori Nakagyo-ku, Kyoto, Japan

Tel : 81-75-253-0444

Fax : 81-75-253-0448

E-mail : head@townmining.co.jp

Tokyo branch



Zip code : 105-0001

Address : 6F Yusei Fukushi-kotohira Bldg. 1-14-1, Toranomom, Minato-ku, Tokyo, Japan

Tel : 81-3-3580-1411

Fax : 81-3-3580-1441

COMPANY OUTLINE



“Associated company”

TMC KOREA



Zip code : 730-030

260,Gongdan-dong,Gumi-city, Gyung-sang buk-do,Korea

Tel: 82-54-462-6117 Fax: 82-54-462-6122

URL: <http://www.townmining.com>

INTRODUCTION



“Metal recycling ensures repeated use of a valuable raw material”

“Create the business of recycling rare metal resources”

TMC understands client’s needs changing from day to day and contributes to society as much as obtains satisfaction from both our suppliers and customers by recycling rare metal bearing scraps as rare metal resources, using our original know-how based on the knowledge and wisdom with forethought.

Continuing the research development of high recycling technology by staff with deep expertise and the renewal of the safe and efficient machinery equipment for recovery, we are creating rare metal recycling business by our thoroughgoing quality control and customer service.



Ni scrap



Co scrap



Ti scrap



Si scrap

<Recycle flow>



Collection and acceptance



Analysis and acceptance



Processing



Packing and shipping

INTRODUCTION



“Production of high quality cobalt hydroxide from scrap—Sole technology TMC developed / TMC Korea”

Scraps

Metal Cobalt

Scraps

Dissolution

Electrolysis 1st cleaning

Collection & Cutting

2nd cleaning

Drying

Finished goods



QUALITY



“TMC practices quality control management”



We obtained ISO 9001 on December 12, 2002 and have been trying to improve the quality control system.

In our laboratory, specialist staff has been developing recycling technologies for environment and for metal scraps from new field.

Under the slogan of our quality policy “Sustainable Solutions for the Earth”, we would hope co-existing between people, living and nature.



PRODUCT



“We are creating Rare Metal Recycling Business”

TMC mainly deals with scraps of nonferrous metals generated from almost all the industrial sites such as electrical, electronic, chemical, aerospace, and mechanical plants.

TMC produces value-added nonferrous metals from scrap generated various sources such as the secondary battery(Li-ion,Li-polymer,MH),super alloy, semiconductor, spent catalysts, samarium-cobalt magnet, titanium, zirconium, molybdenum, and other relevant materials.

The value-added products are utilized in broad areas from chemical to aerospace industries.

Metals

Rare metal

Ni •Co •Ti •Mo •W •Ta •Zr •Si etc

Precious metals

Au •Ag •Pt •Pd •Ir •Ru •Rh etc

Items

Superalloy scraps

Spent catalyst

Secondary battery scraps

Zirconium scraps etc.

Electronic scraps

Precious metal bearing residues

Titanium scraps

High Performance Materials

Main Materials

The periodic table of the elements

1	2	3	4	5	6	7	8	9	10	11	12	13	14	15	16	17	18
H																	He
Li	Be											B	C	N	O	F	Ne
Na	Mg											Al	Si	P	S	Cl	Ar
K	Ca	Sc	Ti	V	Cr	Mn	Fe	Co	Ni	Cu	Zn	Ga	Ge	As	Se	Br	Kr
Rb	Sr	Y	Zr	Nb	Mo	Tc	Ru	Rh	Pd	Ag	Cd	In	Sn	Sb	Te	I	Xe
Cs	Ba	*	Hf	Ta	W	Re	Os	Ir	Pt	Au	Hg	Tl	Pb	Bi	Po	At	Rn
Fr	Ra	**	Rf	Db	Sg	Bh	Hs	Mt	Ds	Rg	Uub	Uut	Uuq	Uup	Uuh	Uus	Uuo
*Lantanoid		La	Ce	Pr	Nd	Pm	Sm	Eu	Gd	Td	Dy	Ho	Er	Tm	Yb	Lu	
**Actinoid		Ac	Th	Pa	U	Np	Pu	Am	Cm	Bk	Cf	Es	Fm	Md	No	Lr	

Rare Metal
 Object of national stock
 TMC staple items
 TMC key items

<http://www.townmining.co.jp>
