

T.M.C TOWN MINING Co.,LTD

Metal working, Machine industry

Electronic industry

Battery industry

Aerospace industry

Chemical industry



MESSAGE



“TMC who initiates a bright future. For PROLONGING LIFE OF PLANET EARTH”



CEO Hiroshi Miyawaki

Nowadays it is used to familiar word “The Sustainable Development Goals (SDGs) adopted by the United Nations in 2015.

TMC upholds “PROLONGING LIFE OF PLANET EARTH” fall into the category of SDGs goals 13 “Take urgent action to combat climate change and its impacts” as a corporate mission from founded in 1986.

Japan doesn’t have mineral resources, but Japan is one of the leading urban mining countries in the world.

It is necessary for use the resources of urban mining is recycling technology.

Fortunately, TMC has recycling technology that we have accumulated since our founding.

The recycling technology is packed with the necessary elements that the entire planet is aiming for. We will not only inherit the technology, but also add value that fit with the times, develop technology that is friendly to both people and the environment, and develop businesses that only we can do.

In addition, everything is becoming more automated, and artificial intelligence is making remarkable progress.

But isn’t there something that only people can do?

I think that I want to have an intimate relationship with customers, partner companies, and employees.

We will inherit the trust and achievements built up by our predecessors and we will continue to be a company that solves social issues in response to rapid environmental changes with a flexible attitude.



OVERVIEW



"TMC achieves success with advanced technology and competitive positioning"

In 1986, TMC was started in Osaka, Japan. TMC has continued to grow in the field of resources. In addition, TMC has been recognized as a leading company working for the global environment through the recycling of nonferrous metals including rare metals in compliance with social requirements in the environment.

TMC is aiming to work as world-class recycling company through excellent management practices in the areas of QC and its participation in maintaining environmental standards. TMC is also committed ideology for global survival through R/D.

Company name TOWN MINING CO.,LTD.

Founded March 1986

Capital ¥95,250,000

Executives President Hiroshi Miyawaki

 Managing Director Tsuyoshi Urano

 Director Yusuke Daito

 Director Masayuki Shimamoto

 Adviser Kazuyoshi Tanaka

 Chairman Akira Miyawaki

Employees 65persons (as of Nov.12.2025)

Business sites 6 places (Domestic 6)

Correspondent banks

- Resona Bank, Ltd. (Kyoto branch)
- Mizuho Bank Ltd. (Kyoto branch)
- MUFG BANK, Ltd. (Kyoto Branch)
- Shoko Chukin Bank (Kyoto Branch)
- Shiga Bank (Kyoto Branch)
- Sumitomo Mitsui Banking Corporation (Kyoto Branch)
- Japan Finance Corporation (Kyoto Branch)

Customers

- ALCONIX Corporation
 - JFE STEEL Corporation
 - TDK Corporation
 - NIPPON STEEL Corporation
 - NIPPON YAKIN KOGYO Co., LTD
 - FUJIKOSHI Corporation
 - Maxell, Ltd.
 - MURATA MANUFACTURING Co., LTD.
 - Overseas (America, Asia and Europe each district)
- etc.

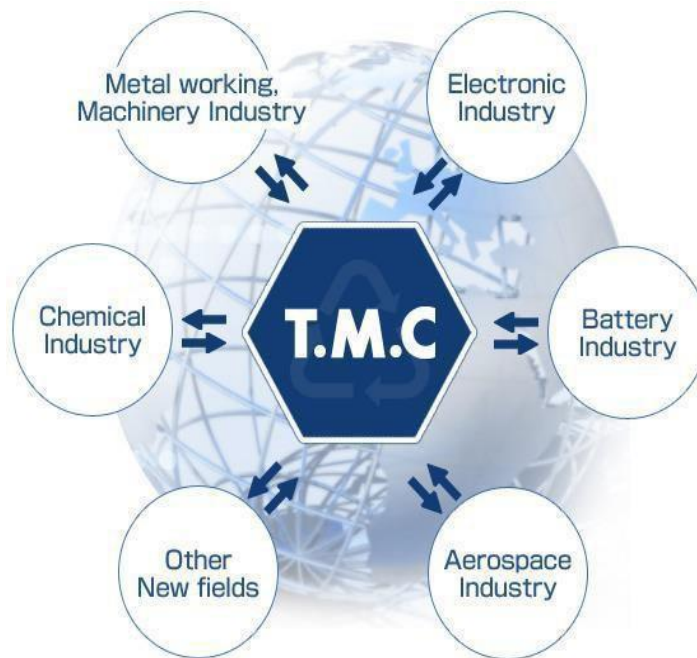
(Japanese alphabetical order)

VISION



"Sustainable Solution For The Earth"

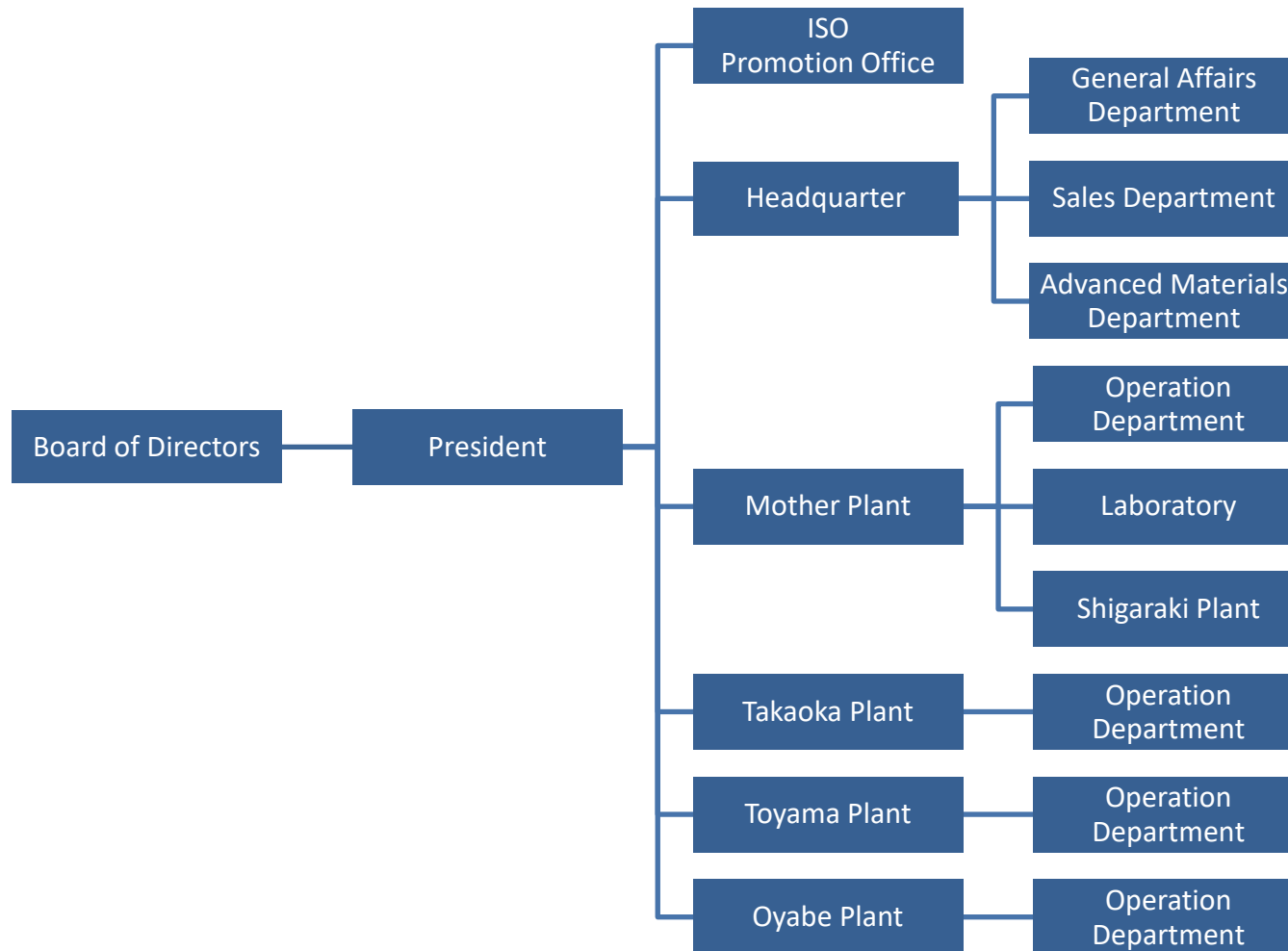
TMC is committed to global survival by being part of the global future



Rare metal...that does not exist on earth rarely

TMC exists in the center of globe, where people are living in.

ORGANIZATION



HISTORY



"Now TMC aims to be reborn as a global recycling company, aspiring to become the world-best."

2024 11	Closed Tokyo Office and integrated to Kyoto	2005 11	Established TMC CHINA
2024 09	Opened "Oyabe Plant"	2002 12	Obtained ISO 9001
2018 04	Opened "Toyama Plant"	2002 08	Increased capital up to 80,250,000 yen
	"MR" name changed from "MR" to "Takaoka Plant".	2001 04	Increased capital up to 60,000,000 yen Started Electrolyzing of Cobalt [Reclaim of high-purity cobalt metal]
2018 03	Established Advanced Material Department	2000 12	Obtained ISO 9002
2017 08	Merged TCMR Co.,Ltd. ,and Opened "MR".	2000 10	Opened IT Center in Shiga Pref
2015 04	Opened " Shigaraki Plant "	1998 10	Opened Solar Material division
2014 04	Moved to Kyoto	1998 10	Established TMC KOREA
2012 03	SiX (Silicon Powder) project is launched	1996 04	Established Notogawa Weighing Center Co.,Ltd.
2011 02	TMC's proposal has been adopted as "Subsidy Business", The Ministry of Economy, Trade and Industry was offering	1996 04	Opened Notogawa plant in Shiga Pref
2010 01	Installed Carbonization Furnace at Mother Plant	1995 09	Opened Titanium Division in Shiga Pref
2009 05	All plant facilities concerned with TMC have been integrated to Mother Plant	1994 08	Opened Distribution center in Shiga Pref
2009 05	Opened " Mother Plant "with a state of the laboratory	1988 09	Moved to Higashi-Osaka and Organized Corporation with a capital of 30,000,000 yen
2007 10	Increased capital to 95,250,000 yen	1986 03	Started doing business in Osaka City
2006 09	Separate Electrolysis Division , established TCMR Co.,Ltd.		
2006 01	Open TOKYO BRANCH		

COMPANY OUTLINE



“Business base”

Mother Plant



“Has revived as a raw material in the mother plant quality is trusted”

thorough quality control, aiming to consolidate in one place the work efficiency, and each plant was in Shiga Prefecture in May 2009, Having a site of about 26,400 square meters, our company started as a mother plant exactly.

Secondary battery (Li-ion · MH) scrap, solar cell-related scrap, nickel, cobalt, titanium, tungsten Emissions such as handling huge yards, a rare metal, making full use of analytical instruments, equipment, machinery of various control signals to suppliers I have recycled as raw material quality, which is reliability.



“Business base” Shigaraki Plant



With increase in quantity of handling, we opened a plant in the same city as a satellite plant of Mother Plant.

It occupies a land area of approx. 6,600 square meters

and it's a good location in 3 minutes access from Shigaraki IC (interchange) at the New Meishin-Expressway.

Takaoka Plant



Zip code : 933-0073

Address : 142-2, Ogino, Takaoka-city,

Toyama, Japan

Tel : 81-766-29-0999

Fax : 81-766-29-0004

事業所紹介
COMPANY OUTLINE



“Business base”
Toyama Plant



Zip code : 939-2223
Address : 137-1, Sasadu, Toyama-city,
Toyama, Japan
Tel : 81-76-481-6133
Fax : 81-76-481-6136

Oyabe Plant



Zip code : 110-0005
Address : 603 Aiosu-Akihabara Bldg..3-2-2,Ueno,Taitou-
ku, Tokyo, Japan
Tel : 81-3-6284-2322
Fax : 81-3-6224-2321

事業所紹介
COMPANY OUTLINE



“Business base”

Head Office



Zip code : 604-8153

10F Risona Kyoto Bldg.,

691 Takannacho Shijo-Agaru

Karasuma-dori Nakagyo-ku, Kyoto, Japan

Tel : 81-75-253-0444

Fax : 81-75-253-0448

E-mail : head@townmining.co.jp

COMPANY OUTLINE



“Cooperating company”

ISECOSOLUTION Co., Ltd.



Zip code : 39-376

**216,1 Gongdan-ro,Gumi-city,Gyeongsangbuk-
do,Republic of Korea**

Tel: 82-54-462-6117 Fax: 82-54-462-6122

URL : <http://www.isecosolution.com>

INTRODUCTION



“Metal recycling ensures repeated use of a valuable raw material”

“Create the business of recycling rare metal resources”

TMC understands client's needs changing from day to day and contributes to society as much as obtains satisfaction from both our suppliers and customers by recycling rare metal bearing scraps as rare metal resources, using our original know-how based on the knowledge and wisdom with forethought.

Continuing the research development of high recycling technology by staff with deep expertise and the renewal of the safe and efficient machinery equipment for recovery, we are creating rare metal recycling business by our thoroughgoing quality control and customer service. We are also focusing on lithium recycling, mainly at our Takaoka and Toyama plants.

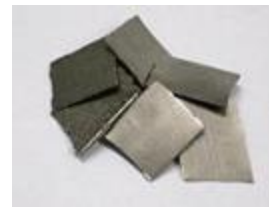
In recent years, demand for lithium has increased rapidly, mainly due to the spread of electric vehicles and renewable energy, However, lithium mining is environmentally hazardous and resource depletion is a concern. By recycling lithium from urban mines, We believe that recycling lithium from urban mines can reduce the impact on the environment and realize sustainable supply, We hope to be a company that contributes to society by making full use of our unique know-how.



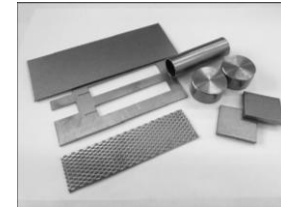
Recycled lithium carbonate



Ni scrap



Co scrap



Ti scrap



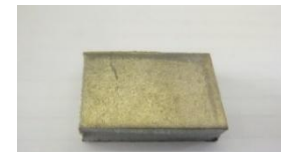
Molybdenum



Tungsten



Tantalum



Zirconium

INTRODUCTION



<Recycle flow>



Collection and acceptance



Analysis and acceptance



Processing



Packing and shipping



QUALITY



“TMC practices quality control management”

ISO 9001 付属書

登録番号：JQA-QM5670 1 / 1

登録事業者：
ティーエムシー株式会社

登録活動範囲：
特殊金属（Ni、Co、Ti、Mo、W、Ta、Nb、Ga、Si、Zr等）及び
それらの合金と貴金属（Au、Ag、Pt、Pd等）を含むスクラップ類からの検収・選別・
選別・分選・解体・プレス・乾式処理等による特殊金属及び貴金属再生品の設計・開発
及び製造

関連事業所：
・ティーエムシー株式会社 マザープラント
滋賀県甲賀市水口町西ヶ丘1-6-5
[特殊金属及びそれらの合金と貴金属を含むスクラップ類からの検収・選別・
分選・解体・プレス・乾式処理等による特殊金属及び貴金属再生品の設計・開発
及び製造]

登録日：2006年12月1日
登録更新日：2023年12月6日
有効期限：2026年12月5日
本規格は国際規格（ISO 9001）に基づき、
適合性を示すものではありません。

一般財団法人 日本品質保証機構
理事長 石井 裕品

Member of
IQNET

JQA

**ISO 9001
マネジメントシステム登録証**

登録番号：JQA-QM5670

登録事業者：
ティーエムシー株式会社
京都府京都市中京区烏丸通西条上ル芋町691番地
りそな京都ビル10階

当機構は、上記事業者の品質マネジメントシステムを審査した結果、付属書に記載
する範囲において、下記規格の要求事項に適合していることを証します。

ISO 9001 :2015 / JIS Q 9001 :2015

登録日：2006年12月1日
登録更新日：2023年12月6日
有効期限：2026年12月5日
本登録は国際規格（ISO 9001）に基づき、
適合性を示すものではありません。

一般財団法人 日本品質保証機構
東京都千代田区有明3-2-5
理事長 石井 裕品

Member of
IQNET

JQA



We obtained ISO 9001 on December 12, 2002 and have been trying to improve the quality control system.

In our laboratory, specialist staff has been developing recycling technologies for environment and for metal scraps from new field.

Under the slogan of our quality policy “Sustainable Solutions for the Earth”, we would hope co-existing between people, living and nature.

PRODUCT



“We are creating Rare Metal Recycling Business”

TMC mainly deals with scraps of nonferrous metals generated from almost all the industrial sites such as electrical, electronic, chemical, aerospace, and mechanical plants.

TMC produces value-added nonferrous metals from scrap generated various sources such as the secondary battery(Li-ion,Li-polymer,MH),super alloy, semiconductor, spent catalysts, samarium-cobalt magnet, titanium, zirconium, molybdenum, and other relevant materials.

The value-added products are utilized in broad areas from chemical to aerospace industries.

Metals

Rare metal

Ni • Co • Ti • Mo • W • Ta • Zr • Si • Li
etc

Precious metals

Au • Ag • Pt • Pd • Ir • Ru • Rh etc

Items

Superalloy scraps

Spent catalyst

Secondary battery scraps

Zirconium scraps etc.

Electronic scraps

Precious metal bearing residues

Titanium scraps

High Performance Materials

The periodic table of the elements

1	2	3	4	5	6	7	8	9	10	11	12	13	14	15	16	17	18
H																	He
Li	Be											B	C	N	O	F	Ne
Na	Mg											Al	Si	P	S	Cl	Ar
K	Ca	Sc	Ti	V	Cr	Mn	Fe	Co	Ni	Cu	Zn	Ga	Ge	As	Se	Br	Kr
Rb	Sr	Y	Zr	Nb	Mo	Tc	Ru	Rh	Pd	Ag	Cd	In	Sn	Sb	Te	I	Xe
Cs	Ba	*	Hf	Ta	W	Re	Os	Ir	Pt	Au	Hg	Tl	Pb	Bi	Po	At	Rn
Fr	Ra	**	Rf	Db	Sg	Bh	Hs	Mt	Ds	Rg	Uub	Uut	Uuq	Uup	Uuh	Uus	Uuo
*Lanthanoid		La	Ce	Pr	Nd	Pm	Sm	Eu	Gd	Td	Dy	Ho	Er	Tm	Yb	Lu	
**Actinoid		Ac	Th	Pa	U	Np	Pu	Am	Cm	Bk	Cf	Es	Fm	Md	No	Lr	

Rare Metal
Object of national stock
TMC staple items
TMC key items

<http://www.townmining.co.jp>
